

Experience the Power of Professional Mapping

GIS SOFTWARE FOR EVERYONE

Global Mapper is a powerful and affordable GIS application that combines a comprehensive array of spatial data processing tools with access to an unparalleled variety of data formats. Developed for both GIS professionals and map enthusiasts, this versatile software package is equally well suited as a standalone GIS data management tool or as a complement to an established GIS system.

CREATE BETTER MAPS WITH GLOBAL MAPPER

- Import, display, edit and export virtually any type of geospatial data; vector, raster, elevation, 2D, 3D, spatial database or expose the spatial characteristics of the data with powerful yet intuitive analytical tools
- Merge, tile, convert, mosaic, reproject, and print stunning maps
- Export and share data with most GIS or CAD systems
- Available network and USB dongle licensing provides multi-seat users with flexible licenses allowing easier access to the software across entire organizations
- Access dozens of free online datasources

NEW SUPPORT FOR USER EXTENSIONS

Create your own custom application to run in Global Mapper! Features the COAST cost/benefit analysis for sea level rise and storm surge flooding extension

- Third-party partners or end-users can now create their own apps to run in Global Mapper
- Extend the functionality through toolbars and/or menu items

These feature extensions will have access to all data loaded in the Global Mapper application through the same API used by the Global Mapper SDK



View Shed Analysis



Flood Analysis

ANALYSIS TOOLSET

Global Mapper's Analysis Toolset are a mature, powerful, and easy to use spatial analysis kit. Functions include:

- Contour Generation
- Watershed generation and flow analysis
- Ridge Line tool
- Volume calculations between two surfaces with a variety of mathematical functions
- Edit and re-calculate multiple view shed layers
- Terrain combining/compare tool
- Path profile/line of sight tool and signal strength analysis
- Site pad placement
- Model and visualize water level rise for quick flood plain analysis



Marlette Lake overlooking Sand Harbor, Lake Tahoe. Image created by Steven McQuinn using data from OpenTopography.org and The USDA National Agricultural Imagery Program

DATA ACCESS!

- Support for over 200 geospatial data types and growing.
- Built-in WMS support offers direct access to countless online data servers providing imagery, topographic maps, and elevation datasets for the entire world.
- Preconfigured data connections include the USGS 10m and 30m NED datasets, worldwide OpenStreetMap tiles, DigitalGlobe, and Landsat Satellite Imagery.
- Global Mapper's rectification tool allows any supported image file or PDF to be imported and registered creating a geographically aligned raster layer.
- Automatically load and merge files associated with an attribute of selected features.

LIDAR FUNCTIONALITY INCLUDES:

View and process LiDAR point clouds with a billion points or more! With a dramatic increase in processing and display speed, Global Mapper v15 makes creating gridded surface model easy and faster.

- Several options for filtering the data during import and rendering the point cloud
- Metadata access provides a detailed statistical breakdown of the point cloud
- Global Mapper Package (.GMP) files are able to store LiDAR point clouds in a compressed format, much smaller than uncompressed LAS data and on par with the best compression available today.
- Supports searching by elevations, reporting tools for point cloud density and improved import and export options, including point cloud to DXF/DWG

For more processing options check out our new LiDAR Module offered with Global Mapper v15 or higher.

SCRIPTING

Did you know that many functions in Global Mapper can be performed by initiating a script. For more information visit our website today!



BLUE MARBLE GEOGRAPHICS

MIND THE GAP BETWEEN WORLD AND MAP

77 WATER STREET, HALLOWELL, MAINE 04847 USA

800.616.2725 / +1.207.622.4622 / FAX: 207.622.4656

44° 17' 15.40" N, 69° 47' 24.55" W, WGS84

BLUEMARBLEGEO.COM / GLOBALMAPPER.COM

LiDAR Module

Color Lidar by RGB/Elev

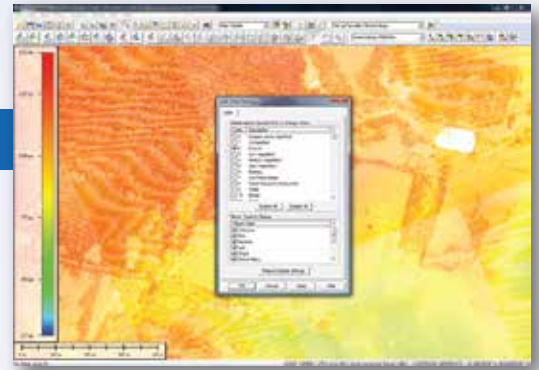


Toolbar Extension for Global Mapper v15

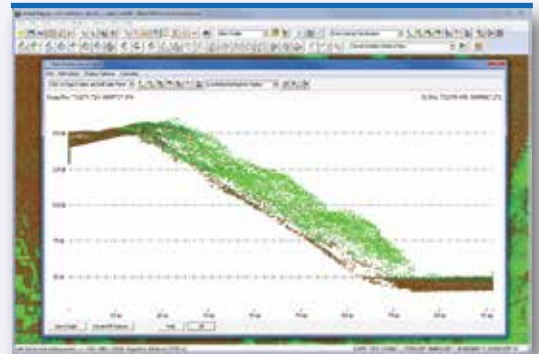
DO I NEED THE LiDAR MODULE?

The Global Mapper LiDAR Module is an optional purchase for those interested in advanced features such as automatic reclassification, Path Profile editing of LiDAR points and dramatically faster gridding. Users will leverage the LiDAR Module through the new LiDAR toolbar. Some features include:

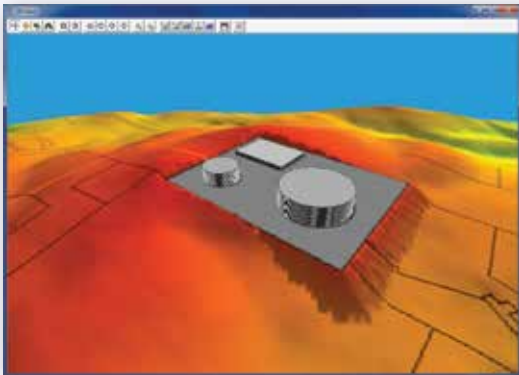
- Path Profile Viewer allows users to view LiDAR points directly in the path profile display window. Users can also directly edit LiDAR points and manipulate LiDAR classifications from the path profile view, rather than from a sub-menu.
- Dramatically faster gridding of point cloud data and support for min/max/average gridding operations on LiDAR point clouds.
- Automatic classification of ground points from unclassified point clouds.
- E57 LiDAR format support.
- Display LiDAR points by height above ground to visualize vegetation and building heights.
- A LiDAR Options tab in the configuration window to allow easy filtering by classification and/or return type.
- Support for reporting LiDAR statistics via script to a text file to facilitate QA processes.
- New LiDAR module toolbar button to colorize LiDAR points from loaded imagery in memory, no export required and more...



LiDAR Module



Path Profile Viewer



Site Pad Placement Tool

SPATIAL DATABASE SUPPORT

Global Energy Mapper has import and export support for the following databases:

- Esri ArcSDE (requires Esri license on 32-bit machine)
- Esri File Geodatabase (includes raster and grid and all versions of file geodatabases, requires Esri license on 32-bit machine)
- Esri Personal Geodatabase (requires Esri license on 32-bit machine)
- MySQL Spatial
- PostGIS/PostgreSQL
- Oracle Spatial
- SpatiaLite/SQLite

All of this energy specific functionality is available at no additional cost! If you already have Global Mapper v15, you can license GEM through the Extension / Add-In Module Manager.

Global Energy Mapper™

In-office field engineering made easy!

WHAT IS THE GLOBAL ENERGY MAPPER MODULE?

Blue Marble Geographics and Spatial Energy have teamed up to offer this exclusive energy-focused module for Global Mapper. With energy specific symbols, data sets and layer options available for direct access from Global Mapper, users are able to access their Spatial On Demand imagery seamlessly to their Global Energy Mapper desktop application. Global Energy Mapper also features powerful energy specific GIS tools such as the increasingly popular Site Pad placement tool, volumetric calculations, whisker line creation for seismic surveys and much more.

GLOBAL ENERGY MAPPER BENEFITS

Global Energy Mapper specifically addresses the needs of Oil, Gas, and Mining companies worldwide.

- Geographic Calculator integration. Users with a current Calculator license can activate GeoCalc within the Global Energy Mapper module. Leverage the power of the GeoCalc coordinate library, including unmatched coordinate transformation definitions, a direct connect to the online EPSG registry, dozens of Geoids and the ability to make an offset from a Geoid.
- Specialized oil and gas symbols including point symbols, geoshare data model, line symbols (USGS road, pipeline) area symbols, lease hold and open acreage.
- Load LiDAR point clouds with billions of points.
- Individualized, Direct Access to Spatial On Demand Imagery Layers.
- Print to large format plotters up to 52" x 60" in size.
- Supports Geo-PDF, SPS, SEG-P1 and other oil and gas formats
- Creates flattened site plans that smoothly transition sets of areas into the surrounding terrain.
- Support of World View 2's 8 band format including changing of band order, emphasis and output.
- Cost-effective desktop application delivers a comprehensive tool kit that can be used across an organization with a minimal investment when compared to other desktop GIS applications.